



SCAFFOLDING COMPANY LTD

CREATING AN EVEN SAFER WORKING ENVIRONMENT



Our goal is to create an all-encompassing safety strategy that kicks danger, accidents and bad practice into touch.

TRAD
SCAFFOLDING COMPANY LTD

PLAY IT SAFE

MAKE THE RIGHT CHOICE

Tel: 08458 99 55 55 | www.trad.co.uk

TRAD PRIDES ITSELF ON ITS PROFESSIONALISM AND HAS A REPUTATION FOR OUTSTANDING SERVICE AND VALUE, ENGINEERED ACCESS SOLUTIONS.

TRAD Scaffolding was founded in 1971 and has enjoyed successful growth over the last 40 years through consistently high service levels and a reputation for very high quality work. The company is now the largest scaffolding group in the UK and continues to expand with considerable ongoing investment in stock, systems, vehicles and staff.

Our professionalism and dedication to client service bears testament to the fact that 80% of our work is repeat business.

TRAD is now involved in some of the most important construction projects in the UK and are able to undertake projects of any scale and have the workforce and stock to carry out significant numbers of projects simultaneously.

WHEN EVER YOU THINK SCAFFOLDING, THINK TRAD.

TRAD PLAY IT SAFE IN THE FOLLOWING SECTORS

Demolition

New Build

Refurbishment / Listed

Local Authority

Public Sector

Airport Maintenance

Airport Terminals

Rail / Civil Engineering





COMPANY STRUCTURE

TRAD Scaffolding Company has a unique and very successful operating structure with each of the 3 division working autonomous with their own staff in all key positions. Each Division has its own long-standing customer base that it serves.

TRAD is structured into three Contracts Divisions run by Divisional Directors, Chris Smith, Neil Garner, and Tony Mileham.

All the Divisions have their own specific clients, with no geographical constraints between them. This means that they can maintain close links with their customers, working with them wherever they are needed rather than handing a project over to another division for geographical reasons.

Tony Mileham's Division specialises in the Air & Rail Sectors, and is currently securing major clients not currently on TRAD'S customer base.

Together the three divisions employ over 50 office staff with a workforce of 280+ operatives. They are responsible for a combined turnover of over £15 million per annum.

All the management teams, from Divisional Directors to Contracts Managers and Contracts Supervisors, have been promoted through the ranks with TRAD, giving them a real understanding and knowledge of every aspect of scaffolding business via the TRAD perspective, which is tried, proven and fit to meet the challenges set by modern day building methods and this goal of making the industry incident and accident free.

“Ours is a unique company, forged over forty years, through sheer hard work, application and professionalism to become the largest privately-owned scaffolding group in the UK; every day we challenge ourselves and our people to be the best at what they do, to act with integrity and strive to give our Clients the most efficient, safest and professional service possible. ”

DES MOORE – GROUP MANAGING DIRECTOR



HEALTH AND SAFETY

As one of the foremost scaffolding groups in the UK, we constantly strive to always be at the forefront of OH&S Compliance, innovation, and good practice. We want to ensure that we can produce an even safer working environment for our employees, our clients' operatives and the general public.

Our H&S and Contracts Team work tirelessly to involve our employees in a drive to improve behaviour and safe working practices and we wouldn't have been able to successfully

improve SHEQ Standards (Safety, Health, Environment, Quality) without their determination, diligence and professionalism.

TRAD have successfully attained a number of SHEQ Standards – such as OHSAS 18001, ISO 9001, ISO 14001, Building Confidence and Link Up – but we don't view accreditation as an objective in itself. We view these standards, and our Behavioural Management of Safety programme Play it Safe, as powerful tools that scaffolders and staff can use in the process to improve worker involvement, create a safer working environment, and make us the safest company possible.

TRAD TRAILER HANDRAIL SYSTEM

We at TRAD, have been for some time, trying to address the issues regarding working at height when our operatives are unloading vehicles. The benefits of creating a detachable safe zone around the load on a lorry are obvious and another step forward in TRADs Play it Safe campaign.

- The system creates a detachable safe zone around the load on a lorry allowing easy and safe access.
- With only five minutes erect and removal time on site no productivity is lost and the lorry can be unloaded anywhere.
- When not in use all the components are stored under the flatbed, in a purpose built locker.
- We have 80% of our current fleet of over 40 trailers fitted with this bespoke system all to the highest MOT standard.



**VISIT OUR WEBSITE
TO VIEW THE TRAILER
HANDRAIL IN ACTION**

GOAL OR FOUL?

Creating an even safer working environment



BEHAVIOURAL MANAGEMENT PROGRAMME

'Play It Safe' is the latest initiative in our on-going campaign to create a safer working environment – for our team, our clients' operatives and the general public in the execution of our works. It's our goal to create an all-encompassing safety strategy that kicks danger, accidents and bad practice into touch.

Play it Safe is headed by Neil Garner (Divisional and SHEQ Director). Its ultimate aim is to improve the health and safety culture at TRAD and effectively reduce accidents to zero, to create a modern day factory approach to scaffolding.

Our new campaign benefits everyone involved in scaffolding:

- **EMPLOYEES** – effective help and advice to work safer, with our goals clearly set out.
- **CUSTOMERS AND THE PUBLIC** – reassurance and peace of mind from seeing our policies in action.
- **TRAD** – We can grow our business, confident we're doing everything we can to achieve complete scaffolding safety.

TRAD
SCAFFOLDING COMPANY LTD

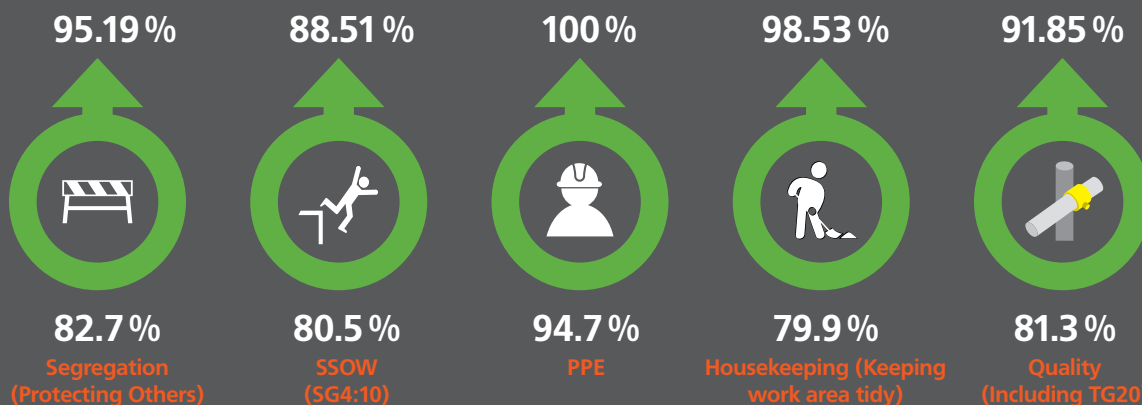
**PLAY IT
SAFE**

MAKE THE RIGHT CHOICE



VIEW THE LATEST
SLT RESULTS ON
OUR WEBSITE

SAFETY LEADERSHIP TOURS' OBSERVATIONS: JANUARY 2013



Green shows 80% or above, or good improvement, amber shows score between 70% to 80% or significant drop, red is cause for concern.



TRANSPORT

We have a fleet of advanced Blue Tec, Mercedes 4 x 2 Axor tractor units to its fleet, all in its distinctive orange and yellow TRAD livery and all fitted with Fassi 130A cranes giving each the capacity to lift one tonne at a distance of 10.5 metres. All vehicles are also fitted with satellite tracking s to pinpoint their whereabouts, enabling the transport manager to respond quickly to changes in site requirements.

- TRAD are members of both the Road Haulage Association and Freight Transport Association.
- TRAD has been awarded a Silver Level with FORS (Freight Operator Recognition Scheme).
- We have 12no. Euro 5 compliant HGV Lorries (Artics) with a 12 tonne load capacity and HIAB's.
- We have 10no. Euro 4 compliant 75 tonne Lorries (Flat Beds) with a 4 tonne load capacity.
- A selection of our fleet is also compliant with the current Cross Rail Lorry requirements.



STOCK

We offer two alternative scaffolding processes – traditional and system build. Both have their advantages and by offering these choices, our customers can be sure that they always get the best value and most suitable solution for each specific project.

- 20,000 tonnes of traditional tube, fittings and boards in stock at our Bromley-By-Bow yard (3.5 acres).
- 25,000 tonnes of the Layher All-round system scaffolding is in stock at our Barking overspill yard (3 acres).
- We also use our own lightweight temporary roofing system and specialist system stair towers.



OPERATIVES

At TRAD we think of all our staff as a major part of the TRAD family. We have always focused on employing quality staff to support our ethos of quality service and are always striving to enhance our staff skill levels through regular training programmes.

- All TRAD operatives are 100% CISRS certificated.
- All Project Supervisors/Foremen are SMSTS /SSSTS certificated. (Site Management Safety Training Scheme / Site Supervisors Safety Training Scheme)
- All Project Supervisors/Foremen hold NVQ3 CISRS cards.



“I’m taking this opportunity to ‘Congratulate’ the Site Team involved at the New Southgate Station. I was extremely impressed with TRAD they were very efficient, professional and proactive from all their Operatives through to their Management. My opinion is that TRAD should be utilised wherever possible in our Framework contract and to be recommended to others, wherever possible.”

**MARK GIBBONS – SITE MANAGER
NETWORK RAIL, MP & I ESTATES**

DEMOLITION

CASE STUDY



THE SHARD

CLIENT: Keltbray

PROJECT VALUE: £753k

Situated over London Bridge Railway Station, the former headquarters of Price Waterhouse Cooper was consigned for demolition in June 2007.

The building was a 100m triangular tower block and has now been replaced by tallest building in Western Europe 'The Shard'.

In August 2007, TRAD Scaffolding was employed by to design and build a scaffold to support the demolition. This was a challenging project, as the building rose above London Bridge Railway Station, which was to remain open throughout the demolition. It was also in close proximity to the access route for Guy's Hospital – and both factors were taken into account during the scaffold design and build.

TRAD erected the scaffolding, using 1,500 tons of equipment, in a project worth £753,000. The scaffold was designed to be raised from cantilevers at the 11th, 15th, and 19th floors to allow gradual demolition of the building.



**VISIT OUR WEBSITE
TO READ MORE ABOUT
THIS PROJECT**

NEW BUILD CASE STUDY



1 TOWER BRIDGE

CLIENT: BERKELEY HOMES

PROJECT VALUE: £700k

This project is one of the most prestigious developments for our client, Berkeley Homes. Our brief was to provide a scaffold that allowed for all adaptations without disturbing the aesthetics of the external scaffolding.

We achieved this in design using traditional tube and fittings with sliding transoms and an outside frame to support the sheeting.

This is currently a live project and is being run to a very high standard by our on-site Supervisor, John Gardner and his team.



**VISIT OUR WEBSITE
TO READ MORE ABOUT
THIS PROJECT**



Stunning riverside development of
2 and 3 bedroom apartments and penthouses

Berkeley
Developed by

T+44 (0)20 7871 0011
www.onetowerbridge.co.uk



REFURBISHMENT / LISTED CASE STUDY



ROYAL FESTIVAL HALL

CLIENT: Interior/Exterior PLC

PROJECT VALUE: £1.6m

The Royal Festival Hall opened in 1951 as part of the Festival of Britain and is a major South Bank venue covering the whole spectrum of music and performing arts.

As part of a major refurbishment programme, our contract brief covered two key aspects.

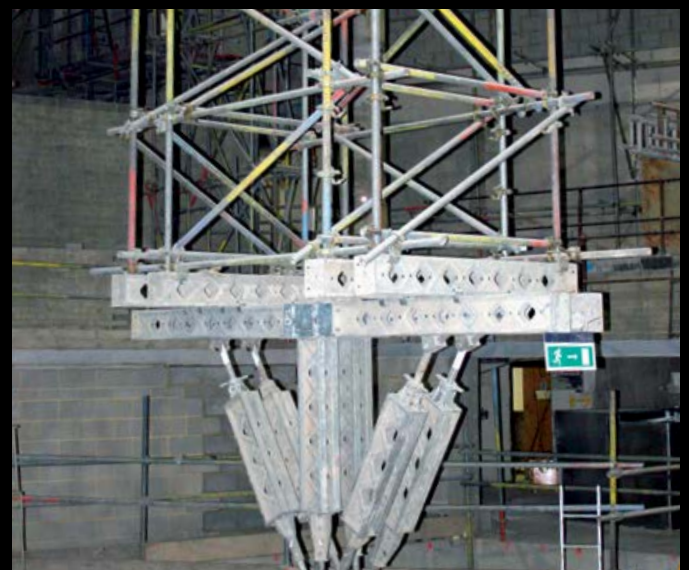
The first aspect was to design and construct a bespoke, multi task high-level access platform to enable the complete refurbishment of the main auditorium.

The main design challenge was that the auditorium scaffold had to be built over the existing stage and seating area, whilst they were being demolished and rebuilt at the same time. The lower section of the platform also supported the lifting beams to facilitate the removal of the demolished materials.

Our solution was to support the auditorium scaffold on 24No. Narrow support towers resting upon Mk. 2 Slim Shores each

with a base dimension no bigger than 0.60m x 1.12m on plan. This was built within an area of 32m x 56m on plan with each tower able to support 31 tonnes.

The second aspect of our work was providing an external access scaffold to the whole of this large building facade for general cleaning works and maintenance of this stone clad building.



**VISIT OUR WEBSITE
TO READ MORE ABOUT
THIS PROJECT**

PUBLIC SECTOR

CASE STUDY



ROYAL LONDON ACOUSTIC SCREEN

CLIENT: SKANSKA

PROJECT VALUE: £200K

Before the commencement of the first phase of demolition at The Royal London Hospital, Skanska approached TRAD Scaffolding with an unusual enquiry. Our brief was to provide an acoustic barrier around a live children's ward that gave protection from the dust and noise of the demolition.

Using the Layher system scaffold and bespoke panels with acoustic matting on the inside we designed the screen as seen in the image. This screen was as independent to the building as possible using modular beams to tie back to concrete columns.

The product was praised by NHS staff who stated that they barely knew the demolition works were going on.



RAIL & AIR

CASE STUDY



RAIL & AIR SECTOR

CLIENT: Various

PROJECT VALUE: £1.8m approx

With over 28 years experience and knowledge, Tony Mileham specialises in the Rail & Air sectors.

When it comes to 'SAFETY' there is no better safety record than Aircraft safety, and this is our primary focus. The bar is set with our experience working within the Air & Rail Sectors. TRAD is a natural safety partner. Our fully trained Staff and Operatives with our Airside & Tracksides capability have a complete understanding of the business needs and expectations when working in this environment. We have a 24 hour rapid response team on hand, who can respond at short notice to any job.



**VISIT OUR WEBSITE
TO READ MORE ABOUT
THE RAIL & AIR SECTOR**

RAIL / CIVIL ENGINEERING

CASE STUDY



CRYSTAL PALACE STATION

CLIENT: Mansell

PROJECT VALUE: £94k

This Victorian building is set to have a full revamp estimated to be in excess of £3.5m. Soon all its passengers will be able to enjoy the bright, easy accessible grand ticket hall, along with all its modern amenities.

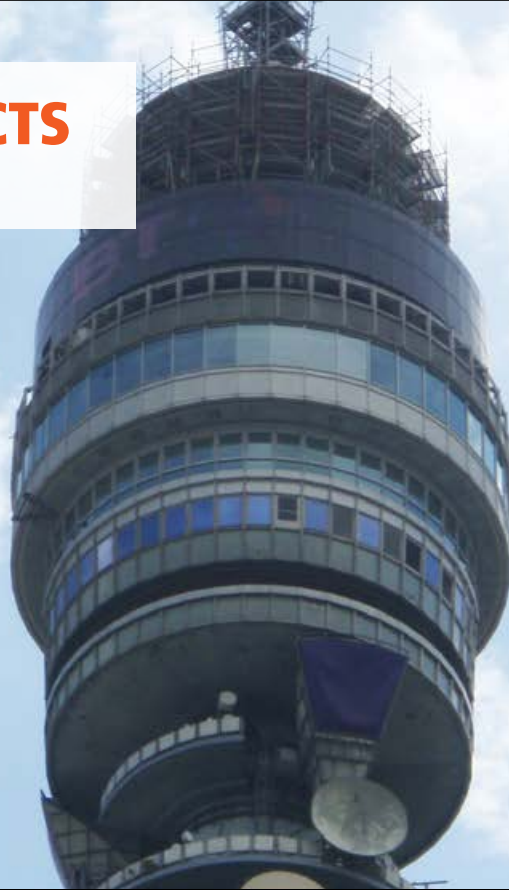
TRAD had to undertake this project, whilst this busy station remained open and maintained a normal service.



**VISIT OUR WEBSITE
TO READ MORE ABOUT
THIS PROJECT**

SPECIAL PROJECTS

CASE STUDY



BT TOWER

CLIENT: ISG Plc

The Grade II listed BT Tower is one of the most icon buildings in London. The replacement of the old BT logo Sign with a new logo installation consists of back-lit BT lettering, which changes colour was a challenging project

With the use of traditional tube and fittings, TRAD Scaffolding erected an independent cantilevered scaffold out of floors 35 to 37, at a height of 167 metres on the BT Tower, to allow for access for the replacement of the existing BT logo sign. These works, which were carried out at a great height, had the added restriction that every component had to be individually tied off to ensure that every allowance had been made for the safety of any dropped materials.





ACCREDITATIONS

TRAD have successfully attained a number of SHEQ Standards and Accreditations.

We view these standards as powerful tools that scaffolders and staff can use in the process to improve worker involvement, create a safer working environment, and make TRAD Scaffolding the safest company possible.



NATIONAL ACCESS & SCAFFOLDING
CONFEDERATION



QMS 545051



EMS 582481



SMS 580140





TESTIMONIALS

Within our chosen operating area of London and the South East we estimate that we have around twice the market share of our nearest competitor. A position only made possible with 80% of our work being repeat business.

“ I would like to add my thanks on behalf of Virgin Atlantic for the fantastic response to our needs. Over the last few years all your staff, from site managers to scaffolders, have been professional and keen to support us in times of need and this time was no exception. Please pass a huge thanks to all involved, they are a credit to you and the TRAD Group. ”

**ANDY T CURREY – TOOLING & GSE MANAGER
VIRGIN ATLANTIC AIRWAYS LTD**

“ We are very pleased with the professional approach that your on site foreman Kevin Hickman has shown, we can confirm the scaffold has been erected to a very high standard. Our site inspectors are from a Scaffolding back ground so they appreciate a good scaffold and foreman, Kevin leads by example in all fields of site activities, ‘Safety First’. ”

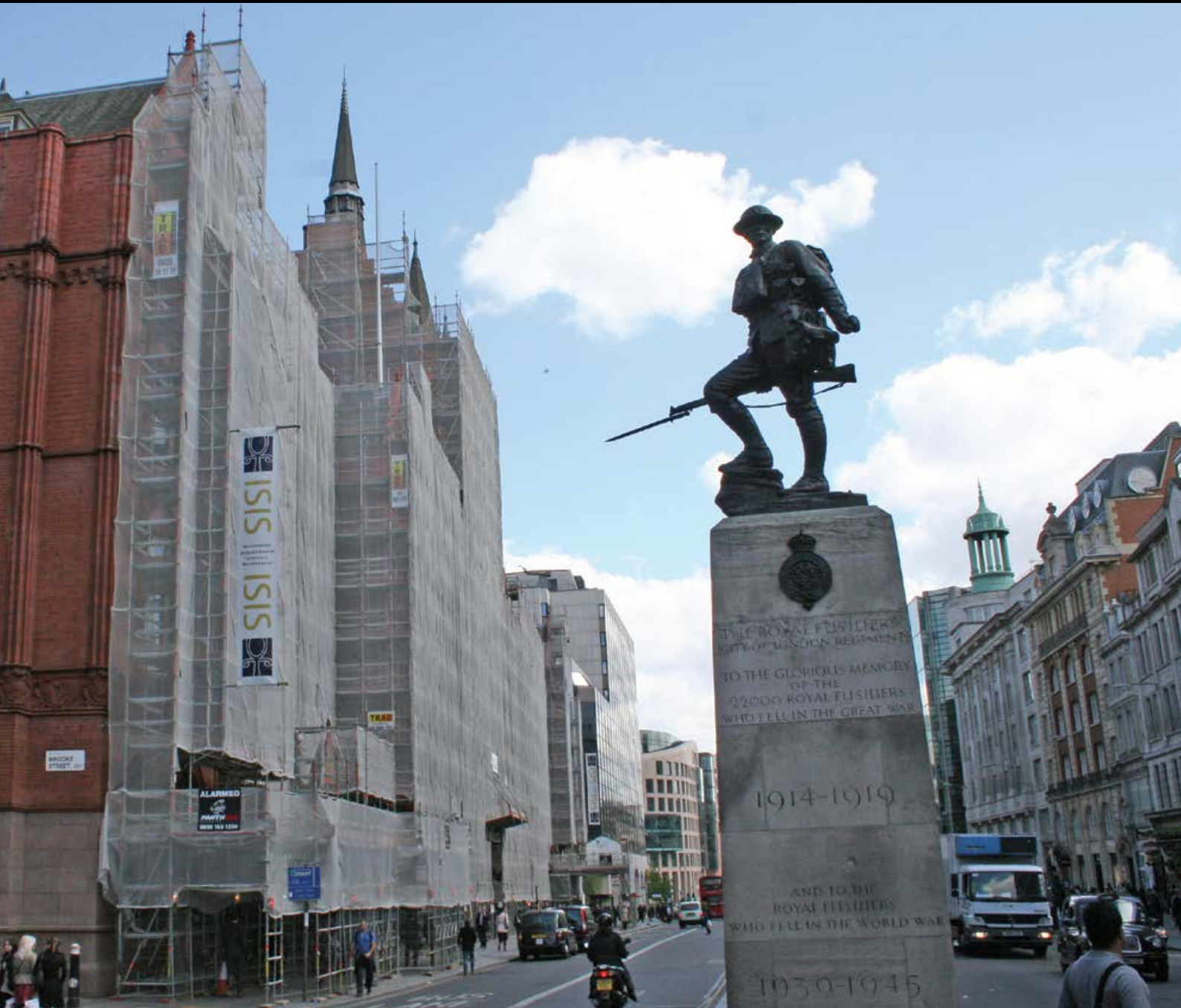
**RAY MERRIDAN – SENIOR SITE MANAGER
MANSELL CONSTRUCTION SERVICES LIMITED**

“ Kier have been working closely with TRAD to provide the massive over roof at King’s Cross Station for Network Rail. The Combisafe roof allows us to work day and night in all weathers keeping the station dry whilst we renovate the Grade 1 listed building. ”

**SIMON MATTHEWS – PROJECT MANAGER
KIER CONSTRUCTION LTD**

**WORKING IN PARTNERSHIP
THINK EXCELLENCE
THINK TRAD**

THINK SERVICE THINK TRAD



TRAD House, Imperial Street, Bromley-by-Bow, London E3 3ED
Tel: 08458 99 55 55 | Email: enquiries@trad.co.uk | www.trad.co.uk

TRAD[®]
SCAFFOLDING COMPANY LTD