



TRAD
SCAFFOLDING
CONTRACTORS





TRAD
SCAFFOLDING
CONTRACTORS







OURS IS A UNIQUE COMPANY, FORGED OVER NEARLY 50 YEARS THROUGH INGENUITY, HARD WORK AND PROFESSIONALISM TO BECOME ONE OF THE LARGEST AND MOST RESPECTED SCAFFOLDING GROUPS IN THE UK. EVERY DAY WE CHALLENGE OURSELVES TO BE THE BEST THAT WE CAN BE, TO ACT WITH INTEGRITY AND IMPRESS OUR CLIENTS WITH THE MOST SKILFUL, SAFEST AND PRODUCTIVE SERVICE AVAILABLE.

DES MOORE, TRAD GROUP CEO

THINK SCAFFOLDING, THINK TRAD

TRAD Scaffolding Contractors was founded in 1971 and has enjoyed continued growth throughout the last five decades. We've earned a reputation for outstanding professionalism and quality. How? By dedicating ourselves to excellent service, seeking new ways to deliver efficiency and safety, and ensuring our offering matches clients' ever changing needs. With outstanding customer satisfaction, TRAD has gained a reputation for producing the highest quality of work in the industry.

TRAD Scaffolding is repeatedly first choice for many of the most important construction projects throughout the UK. With significant reserves of stock, highly experienced staff and a large resource of trained and skilful operatives, we take on projects of any scale. Considerable ongoing investment means that even with increased demand for our services, we can successfully carry out many major projects simultaneously, to the highest standards.

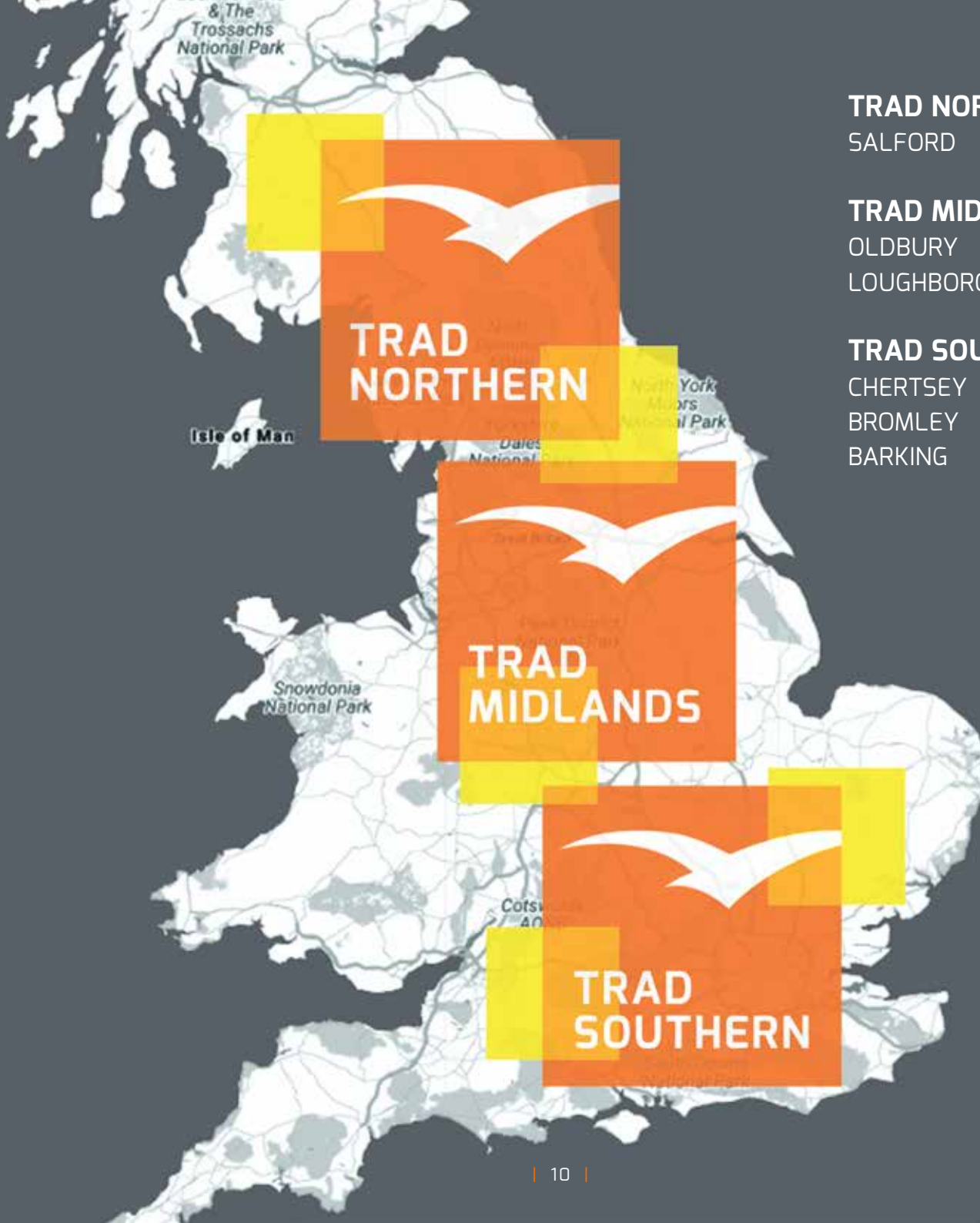
Since joining the ALTRAD Group in September 2013, the TRAD Group has received substantial investments totalling £10 million, resulting in a 70% growth rate to date. With further guidance from the ALTRAD Group's visionary Management Charter 'Pathways to the Possible' the TRAD Group has joined the ranks of the top five scaffolding companies in the UK – with further organic growth yet to come.

DES MOORE, TRAD GROUP CEO



“

OUR PROFESSIONALISM
AND DEDICATION TO
CLIENT SERVICE BEARS
TESTAMENT TO THE FACT
THAT 80% OF OUR WORK
IS REPEAT BUSINESS.



TRAD NORTHERN
SALFORD

TRAD MIDLANDS
OLDBURY
LOUGHBOROUGH

TRAD SOUTHERN
CHERTSEY
BROMLEY
BARKING

COMPANY STRUCTURE

TRAD Scaffolding Contractors is lead by MD Neil Garner, who oversees the three operating divisions. Another key difference of TRAD is its flat management structure – this unusual yet very successful approach ensures each division is autonomous, each with its own staff in key positions, and its own long-standing, satisfied customer base.

The six scaffolding divisions are run by Divisional Directors. TRAD Southern are based in and around London at Chertsey, Bromley and Barking. TRAD Midlands are located at Oldbury and Loughborough, with TRAD Northern at Salford.

With key staff reporting directly to Neil Garner, our flexible business model allows faster decision-making that avoids waiting for corporate approval. It also helps staff in key roles to build closer links with our clients by working with them wherever they're needed.

Collectively, each division is responsible for a combined turnover of over £41 million per year with a total workforce of over 400.

TRAD's management teams, from Divisional Directors to Contracts Managers and Contracts Supervisors, have all been promoted through company ranks – giving them a thorough and practical understanding of every aspect of TRAD's scaffolding business. This also ensures a continuity and consistency of approach that meets the challenges of modern day building methods head on and is dedicated to making the industry incident and accident free.



47+ YEARS

OF REPEAT BUSINESS



£40+ MILLION

PER YEAR TURNOVER



The background of the page is a black and white photograph of an outdoor industrial storage yard. Numerous large, rectangular bundles of metal rods or pipes are stacked in rows. Each bundle is secured with several metal straps. The bundles are arranged in a way that creates a sense of depth and scale. In the background, there are bare trees and a tall, thin vertical pole, possibly a crane or a light tower. The sky is overcast.

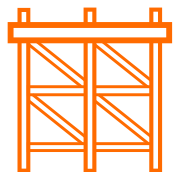
THE SYSTEM SOLUTION WE
USE IS PLETTAC METRIX,
CONSIDERED BY MANY AS
THE MOST INNOVATIVE
SYSTEM AVAILABLE, WITH
PRODUCTION CERTIFICATION
TO ISO 9001.

COMPANY STOCK

We offer two complementary scaffolding processes: traditional Tube & Fittings and the revolutionary Plettac Metrix® modular scaffolding system. With these choices, you can be sure of the best value and most suitable tailored solution for your project, whatever its complexity or size.

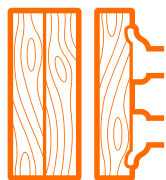
Traditional Tube & Fittings provides the flexibility to meet any scaffolding need. However, Plettac Metrix® modular scaffolding system will provide faster installation times if the project specifications allow.

Additionally, we also use the ALTRIX™ Temporary Roofing System, an all-aluminium modular roofing and weather protection system, which is complementary with both traditional Tube & Fittings and the Plettac Metrix® modular scaffolding system.



25,000tn

SYSTEM SCAFFOLDING
AT OUR LITTLEBROOK
DISTRIBUTION YARD
(3.5 ACRES)



20,000tn

TUBE, FITTINGS & BOARDS
AT OUR BARKING YARD
(3 ACRES)





www.trad.co.uk

PLETTAC METRO
System Scaffold



08458 99 55 55
WWW.TRAD.CO.UK

DARE TO BE
DIFFERENT

PP07 RAB

TRANSPORT AND LIVERY

TRAD Scaffolding Contractors recently purchased 15 new Scania HGV units complete with 1.5 Tonne Fassi Cranes. At a cost of £1.7 million, these modern, high quality vehicles are fully Euro 6 compliant.

As part of our continuing focus on improving safety for our employees and the public, all 15 vehicles have been enhanced with top of the range cameras and in-cab video screens – substantially reducing blind spots for the driver to help protect cyclists and pedestrians.

TRAD Scaffolding Contractors are members of the Road Haulage Association and Freight Transport Association and have been awarded Silver accreditation with FORS (Freight Operator Recognition Scheme). Our new fleet of Scania HGV units strengthens our commitment to achieving the FORS Gold standard in 2018.

Our new Lorry Loader Cranes help create a much safer working environment, especially during remote-controlled lifting operations. All TRAD Scaffolding Contractors HGV Drivers have received certificated training, enabling them to handle every aspect of the lifting process from any position around the truck. Having a fully capable and qualified workforce enables us to deliver a high standard of service to our customers.

TRAD have improved safety for our operatives when unloading vehicles by developing a unique detachable handrail/walkway system using system scaffold that can be easily assembled and is conveniently stored on the lorries.



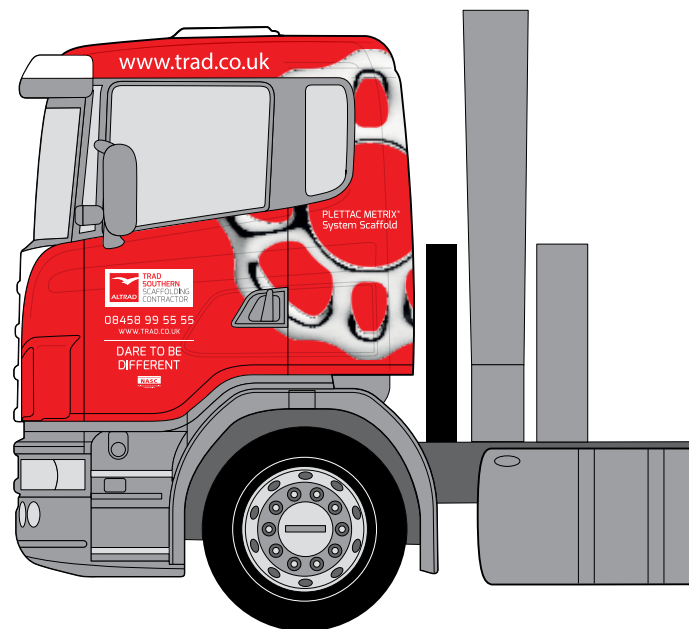
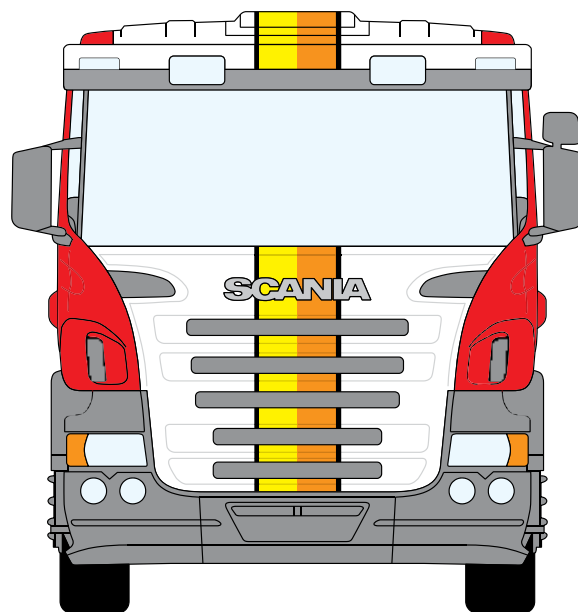
15

SCANIA HGV UNITS
WITH 1.5 TONNE
FASSI CRANES



15

FLAT BED LORRIES





I'D LIKE TO EXPRESS MY
SINCERE GRATITUDE FOR THE
EXEMPLARY WORK THAT TRAD
SCAFFOLDING HAS DELIVERED.
THE COMPANY'S PRECISION
AND PROFESSIONALISM OVER
THE PAST FEW MONTHS SETS
THEM APART AS A TRUE
INDUSTRY LEADER TO BE
HIGHLY PRAISED.

ROB WIDDOWSON, ICIOB PROJECT MANAGER,
BRENNAN LIMITED

COMPANY OPERATIVES

With TRAD, you're assured of a highly skilled, directly employed workforce that benefit from extensive ongoing training, to ensure their work is efficient, safe and thoroughly dependable. This is reflected in our impeccable safety record – Lloyds of London ranks us among the top three safest scaffolding groups in the UK.

Training is important to our business and one of our key objectives is investing in people. We enable our employees to reach their full potential and become valuable assets to the company, while contributing to the wider local community.

The company actively recruits apprentices from local colleges and schools, helping them reach their full potential to be the expert scaffolders of the future – in fact trainees account for 12% of our total workforce.



100% CISRS

CERTIFICATED OPERATIVES



NVQ3 CISRS CARDS

CERTIFICATED SUPERVISORS



SMSTS / SSSTS

CERTIFICATED SUPERVISORS





COMMON SENSE ENGAGEMENT



Complete your path
to common sense

COMMON SENSE ENGAGEMENT

TRAD Scaffolding Contractors considers our people to be our greatest asset. Our values are centred on our scaffolders and staff. As a company we strive to be open, innovative and dynamic, viewing ourselves as a team that engages with clients, suppliers and workforce under a common sense banner that encourages new ideas, development of people, and quality and uniformity of construction.

Ours is a business built on excellence, at the forefront of OH&S compliance, innovation and good practice. We constantly strive to create the safest possible working conditions for our employees, our clients' operatives and the public.

Our Health & Safety and Contracts Team work tirelessly to involve our employees in carrying out safe working practices. It's thanks to the commitment and professionalism of our workforce that we are able to meet Safety, Health, Environment and Quality (SHEQ) standards.

TRAD Scaffolding Contractors has successfully attained a number of SHEQ Standards, including ISO 9001, ISO 14001, the OHSAS 18001, Achilles Building Confidence, RISQS (Link-Up) and UVDB.

At TRAD Scaffolding Contractors, we don't view accreditation as an objective in itself. We consider these standards as a baseline that, when allied to our own initiatives, act as powerful tools our scaffolders and staff employ to create a safe working environment and make us the safest scaffolding company.

OUR INITIATIVES



PLAY IT SAFE

Play It Safe is a key initiative in our ongoing campaign to create a safer working environment – for our team, our clients' operatives and the general public in the execution of our works.



VISUAL STANDARDS

Visual Standards initiative is to ensure that we operate to the highest possible standards and go beyond the minimum that is detailed in SG4:15.



KNOWLEDGE INSPIRED

Knowledge Inspired is a mentoring programme designed to provide a structured process of learning to develop the skills of individuals in Health & Safety and Planning & Commercial.



DIVERSITY & INCLUSION

We believe in giving value to ALL workers, benefiting from and embracing their differences. UK legislation sets minimum standards for companies to support successful workplace diversity and equality – covering age, disability, race, religion, gender and sexual orientation among others.



Think Different. THINK METRIX.

PLETTAC METRIX®

THE FIRST REAL ALTERNATIVE IN RING SYSTEM SCAFFOLDING

Plettac METRIX® is a revolutionary new ring-based system scaffold, proven to be significantly faster and easier to erect than all other systems on the market. The system's unique divisibility allows bays to be broken up both in length and across the width. With the optional 'Permanent Advanced Guardrail' which can be installed from the level below, on-site safety is dramatically improved.

Plettac is one of the world's market leaders in scaffolding systems and has been delivering high quality products worldwide for over 40 years.

The German engineering brand stands for quality and efficiency and uses the latest technology, including 3D modelling and stress analysis software as well as state-of-the-art manufacturing.

For further information please go to: www.tradhireandsales.co.uk/product-range/plettac-metrix/about/

PLETTAC SYSTEM BENEFITS



QUALITY &
COMPLIANCE



COLOUR
CODING



DIVISIBILITY



SPEED



PERMANENT
ADVANCED GUARDRAIL



DECKING



“

OUR BUSINESS DEVELOPMENT MANAGER, LISA BUTLER ARRANGED A SERIES OF INTERVIEWS WITH OUR CLIENTS TO LISTEN TO THEIR EXPERIENCES OF WORKING WITH TRAD SCAFFOLDING AND GATHER FEEDBACK ABOUT OUR SERVICE – GOOD, BAD OR INDIFFERENT. IT’S VITALLY IMPORTANT FOR US TO GAUGE OUR PERFORMANCE SO WE ARE ABLE TO DELIVER A HIGH QUALITY SERVICE THAT FULLY MEETS OUR CLIENTS’ NEEDS. BY UNDERSTANDING AND DEVELOPING GOOD WORKING RELATIONSHIPS WITHIN OUR INDUSTRY, WE’RE IN A STRONGER POSITION TO ACHIEVE OUR TARGETS.





CLIENT VIEWPOINT: LEIGH DAVIS, OPERATIONS MANAGER

ROYAL LONDON HOSPITAL

> **CLIENT:**
BOWMER & KIRKLAND

> **ADDRESS:**
CAMDEN, LONDON

> **PROJECT VALUE:**
£396K



**ACOUSTIC
BARRIER**



**DUST & NOISE
PROTECTION**

What is your impression of our overall service?

Having worked closely with TRAD Scaffolding Contractors for nearly 8 years on the Royal London Hospital project, I can say that their overall service is very good. TRAD Scaffolding's performance was great...the whole process was very collaborative.

Were all tasks completed as scheduled?

Generally speaking, the TRAD Scaffolding Contractors team provided their services whenever we needed them. There were a few occasions where resources were stretched due to high workload but when you're working with scaffolding some flexibility is required.

How was the attitude of our on-site team?

The team's attitude was always very positive. TRAD Scaffolding Contractors site manager developed a good relationship with all project managers and the surveyors.

How did you find our approach towards safety?

Everything was very thorough. The site manager was really proactive and committed to carrying out regular inspections. He also contributed to the safety initiative that Skanska was developing.

Were there any incidents, and if so, how were these dealt with?

I can't recall any incidents. All of the inspections and maintenance were carried out on a regular basis.

How did we finish/close out the account?

The project was very large, so each phase was generally closed down as we progressed, in line with the programme. The whole project was certainly made easier with TRAD Scaffolding Contractors good relationship with the managers and surveyors. A final running account was kept from day one, which helped ensure that everyone knew what was happening and where they were headed throughout the project. Having an ongoing understanding of the account meant that there were no surprises at the end of the project.

Was the project completed to your satisfaction?

Yes. TRAD Scaffolding Contractors efforts and performance across the project were great. We can always rely on TRAD Scaffolding Contractors to deliver.







CLIENT VIEWPOINT: RICHARD ETRIDGE, CONTRACTS MANAGER

THE WALLACE COLLECTION

> CLIENT:
CONISTON

> ADDRESS:
MARYLEBONE, LONDON

> PROJECT VALUE:
£200K



VICTORIAN
BUILDING



ROOFING
SHEETING

What is your impression of our overall service?

Your service has been exemplary. We always feel comfortable using TRAD Scaffolding Contractors as you make yourselves as familiar as possible with the buildings that we work on. Your prices are also very reasonable for the high standards that you work to.

Were all tasks completed as scheduled?

Yes, everything was completed on time. There were no problems and TRAD Scaffolding Contractors staff contacted us every day to plan and discuss everything in advance. The team were on-site whenever we needed them and were always able to make suggestions to help us out – the team really delivered.

How was the attitude of our on-site team?

All the way through the British Museum project, Micky Popov and his team were very knowledgeable about the security and fabric of the buildings – there wasn't a single issue from start to finish. On the Wallace project, TRAD Scaffolding Contractors proved very popular with the client and your methods worked well, so you helped us achieve another great result.

How did you find our approach towards safety?

At no point did we feel that we were forcing TRAD Scaffolding Contractors into practices they were uncomfortable with. Equally, TRAD Scaffolding Contractors would always advise us on alternative ways to proceed with what we had in mind. All the required systems and working platforms were developed with us, so we were never found wanting. Also, if any of our

requests were unrealistic, TRAD Scaffolding Contractors would point them out; we really appreciate your uncompromising attitude towards compliance and safety.

Were there any incidents, and if so, how were these dealt with?

There were no incidents to report at all. The TRAD Scaffolding Contractors team are always very quick to react and promptly resealed our sheeting and roofing materials after they became torn due to stormy weather.

How did we finish/close out the account?

This was all settled by the surveyors and managers, so there was never a need for me to get involved personally – so in that respect it was very good.

Was the project completed to your satisfaction?

Absolutely. TRAD Scaffolding Contractors accommodated everything exactly as we wanted. Your engineer's drawings were very thorough. If ever TRAD Scaffolding Contractors needed more access, you would bring it to our attention and offer an alternative solution. You always provided us with the deck levels and access that would be needed too. It was not possible to forecast everything from the start but TRAD Scaffolding Contractors was very flexible in adapting their approach accordingly. They have proved to be a highly beneficial partner to us.







CLIENT VIEWPOINT: NIGEL BATES, ASSISTANT PROJECT MANAGER

WESTBOURNE PARK STATION

> CLIENT:
TFL

> ADDRESS:
WESTBOURNE PARK, LONDON

> PROJECT VALUE:
£44K



PUBLIC
WALKWAY



VERY TIGHT
DEADLINE

What is your impression of our overall service?

Overall, TRAD Scaffolding Contractors service has been very good. When installing a bespoke, system scaffold bridge to allow pedestrian access during a major refurbishment, the team was flexible and everyone that we dealt with was very accommodating to our needs. TFL passengers required access across an area that was completely closed off due to building work on the main access stairs and the guys were determined and very willing to get the job done to the highest standard possible.

Were all tasks completed as scheduled?

Yes, every task was completed to our deadlines, even with last minute changes. The project had a very tight deadline and we called upon all our experience to design a public walkway within a 3 hour window overnight. To ensure that everything ran to schedule, the TRAD Scaffolding Contractors team designed a full mock-up in our head office the weekend before. This helped us plan for any potential issues as we knew there could be no margin for error. As planned, the project ran like clockwork and we were very happy with the final results.

How was the attitude of our on-site team?

The attitude of everyone that we worked with was spot on. Everyone was very positive, helpful and flexible in the way that things were done.

How did you find our approach towards safety?

TRAD Scaffolding Contractors approach to safety was very good. I saw safety equipment being checked regularly throughout shifts and everything was in line with SPC monitoring guidelines.

Were there any Incidents, and if so, how were these dealt with?

There were no incidents reported during the project.

How did we finish/close out the account?

The account was closed over the course of a few discussions. We were delighted with the work that was carried out and everything was tied up amicably.

Was the project completed to your satisfaction?

Yes, it was a job well done.









PROJECT **SHOWCASE**

CHELSEA FC **STAMFORD BRIDGE**

Given the football theme of our 'Play it Safe' campaign, it seemed fitting that TRAD Scaffolding Contractors was successful in securing the scaffolding package for the new lighting systems around the roof at Stamford Bridge.

With difficult access into the ground and only seven weeks to erect and dismantle over 28,000m², we opted for a system scaffold to meet the tight deadline.

We were also asked to provide some cantilever scaffolds at high level to access the roof edge on the East Stand. This required extensive planning in regards to project safety. We thank our workforce for their diligence in completing this prestigious project.

> **CLIENT:**
CHELSEA FC

> **ADDRESS:**
CHELSEA

> **PROJECT VALUE:**
£304K



**FOOTBALL
CLUB ROOF**



**LIGHTING
SYSTEMS**









PROJECT **SHOWCASE**

OLYMPIC PARK **BRIDGE**

After the success of the 2012 Olympics, the Stratford Olympic Park site is undergoing redevelopment and improvements to allow it to fulfil its promise as a lasting legacy. A number of the smaller temporary bridges are being removed from the park, necessitating improvement to the primary F10 bridge to make it wider.

Working closely with Swedish construction firm Skanska, TRAD Scaffolding designed and built the complicated birdcage scaffolding structure on both sides of the bridge. The scaffolding was then hung over the water to provide access to the bridge while the work was being carried out. The scaffold was constructed using traditional Tube & Fittings.

> **CLIENT:**
SKANSKA

> **ADDRESS:**
OLYMPIC PARK

> **PROJECT VALUE:**
£75K+



**OLYMPIC
PARK SITE**



**TRADITIONAL
TUBE & FITTINGS**









PROJECT **SHOWCASE**

CRYSTAL PALACE **STATION**

This Victorian building was due to have a full revamp estimated to be in excess of £3.5million. Now, all its passengers enjoy the bright, easily accessible Grand Ticket Hall, along with all its modern amenities.

TRAD Scaffolding Contractors undertook this challenging project with the stipulation that the busy station had to remain open and maintain a continuous service. Vernard Hosford, Project Manager with engineering recruiters, Mansell said: "As this is my final day with Mansell, here at Crystal Palace, I would like to pass on my gratitude to you and your staff at TRAD Scaffolding Contractors for making this project a success. At a moment's notice you have been pro-active in our requests. I would like to make a special mention of one of your scaffolders, Dave Clarke. Dave was always ready to help and very obliging. His knowledge of scaffold is second to none."

> **CLIENT:**
MANSELL

> **ADDRESS:**
CRYSTAL PALACE

> **PROJECT VALUE:**
£94K



**VICTORIAN
BUILDING**



**EASY ACCESSIBLE
TICKET HALL**



TRAD
SCAFFOLDING
CONTRACTORS

VC
34









PROJECT **SHOWCASE**

CENTRE POINT **TOWER**

After several months of planning, TRAD Scaffolding Contractors started the erection of the cantilever scaffolds for Centre Point Tower.

At the time, this project was probably the most challenging scaffold project in London. The 12,600m² of scaffolding had to be erected in four cantilever sections over thirty-five floors. As if this didn't present enough of a challenge, the work had to be carried out over one of the busiest junctions in Europe, not to mention the live Crossrail site 100m below.

To overcome the significant safety risks to the public and the workmen below, TRAD Scaffolding Contractors adopted several control measures. Some of these measures included bespoke netted fans, secondary and underside netting and tethered tools. The cantilever beams were also erected on wheels, inside the building and then pushed out when the project was 90% complete in order to mitigate the risks further.

> **CLIENT:**
BROOKFIELD
MULTIPLEX

> **ADDRESS:**
NEW OXFORD
STREET

> **PROJECT VALUE:**
£1.4M



**THIRTY FIVE
FLOORS**



**CROSSRAIL SITE
100M BELOW**









PROJECT **SHOWCASE**

THE SHARD, ST THOMAS STREET

The former headquarters of Price Waterhouse Cooper was consigned for demolition in June 2007 – the 100m triangular tower block was due to be replaced by a new 300m building called ‘The Shard of Glass’ – to become the iconic landmark we all now know simply as ‘The Shard’.

In August 2007, TRAD Scaffolding Contractors were contracted to design and build a scaffold to facilitate the demolition.

This was a challenging and complex project, the building was situated above London Bridge Railway Station which was to remain open throughout the demolition – with the site also in close proximity to the access route for Guy’s Hospital.

TRAD Scaffolding Contractors erected the scaffolding using 1,500 tonnes of equipment, in a project worth £753,000. The scaffold was designed to be supported from cantilevers at the 11th, 15th, and 19th floors to enable the gradual demolition of the building, completed in November 2008.

> **CLIENT:**
THE SHARD

> **ADDRESS:**
LONDON BRIDGE

> **PROJECT VALUE:**
£753K



**DEMOLITION
SUPPORT**



**BUILDING ABOVE
RAILWAY STATION**









PROJECT **SHOWCASE**

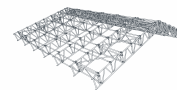
30 CANNON STREET

TRAD Scaffolding Contractors successfully secured the 30 Cannon Street project, a 24 metre-high glazed office block set within its own island overlooked by St Paul's Cathedral. The scaffolding was designed and erected to enable the removal and replacement of the entire floor and ceiling panels from the 1st to the 5th floors of the building.

Due to the extremely busy location of this project, TRAD Scaffolding Contractors built protection gantries around the entire perimeter of the building and installed a net fan which was raised with the progression of the main access scaffolding, to protect the general public whilst the works were being carried out.

Due to the challenging triangular shape of the building (the span of the roof started at 6m and tapered out to 40m) the project was a perfect fit for TRAD Scaffolding Contractors new ALTRIX™ temporary roofing and weather protection system. ALTRIX™ is ideal for demanding environments – and the particular challenges showcased its unique capabilities perfectly.

- > **CLIENT:**
ROMULUS
CONSTRUCTION
- > **ADDRESS:**
CANNON STREET
- > **PROJECT VALUE:**
£285K



**TEMPORARY
ROOF SYSTEM**



**OFFICE
BLOCK**









TRAD SCAFFOLDING CONTRACTORS

DIVISIONS

SOUTHERN

CHERTSEY DIVISION

3000 Hillswood
Business Park,
Chertsey
KT16 0RS

+44 (0)20 8814 3220

BROMLEY DIVISION

South Tower,
26 Elmfield Road,
Bromley
BR1 1LR

+44 (0)20 8980 1155

BARKING DIVISION

TRAD Barking Office and Yard
Renwick Road,
Barking
IG11 0SB

+44 (0)20 8517 5189

MIDLANDS

LOUGHBOROUGH DIVISION

Unit D, The Locks,
Belton Road West Extension,
Loughborough
LE11 5XH

+44 (0)12 1516 3999

OLDBURY DIVISION

Unit 8,
Junction 2 Industrial Estate,
Demuth Way,
Oldbury
B69 4LT

+44 (0)12 1516 3999

NORTHERN

SALFORD DIVISION

Unit 3,
Bridge Mill,
Holland Street,
Salford, Manchester
M6 6EL

+44 (0)12 1516 3999

