



TRAD  
SCAFFOLDING  
CONTRACTORS

# PLAY IT SAFE



EDITION 1

# PLAY IT SAFE



## GOAL OR FOUL?

Creating an even safer working environment

### A WINNING TEAM

Play It Safe is a key initiative in our ongoing campaign to create a safer working environment – for our team, our clients' operatives and the general public in the execution of our works.

TRAD are continuing to improve our safety strategy and kick danger, accidents and bad practice into touch through the Play it Safe campaign.

### WHAT IS PLAY IT SAFE?

TRAD are proud of our excellent health and safety record. But we want to get even better. With Play It Safe we are tackling the behavioural aspect of safety within the scaffolding industry and confronting the culture that leads to operatives not adhering to health and safety guidelines.

Play It Safe sets out our game plan and gives us excellent guidelines for improving TRAD's approach to health and safety.

## HOW 'PLAY IT SAFE' WORKS

### HERE'S WHAT WE'RE DOING TO IMPROVE TRAD'S HEALTH AND SAFETY, AND ACHIEVE OUR GOALS.

We kicked off 'Play It Safe' by setting up a Safety Leadership Team drawn from all areas of our operations, we substitute team members on a yearly basis to bring in new ideas and skills. Every month the Safety Leadership Team (SLT) carry out unannounced audits at a variety of construction sites. These audit scores are reviewed with our Health & Safety Manager and pooled together to give a monthly analysis sheet, showing various trends.

The SLT team review the findings at our monthly meeting where we decide on appropriate actions to improve our Health & Safety performance.

All SLT information is communicated by email and via bulletins to our workforce and clients.

Through these tours we have already introduced new initiatives, such as the removal of 6.4m tubes, which have been cut down to 5.0m lengths, working beyond SG4, and the introduction of our unique Trailer Handrail System. We aim to continuously improve our workforce's behaviour and involve them in assessing their own sites and keeping our 5 key objectives in their minds before work commences to make our company the safest possible.

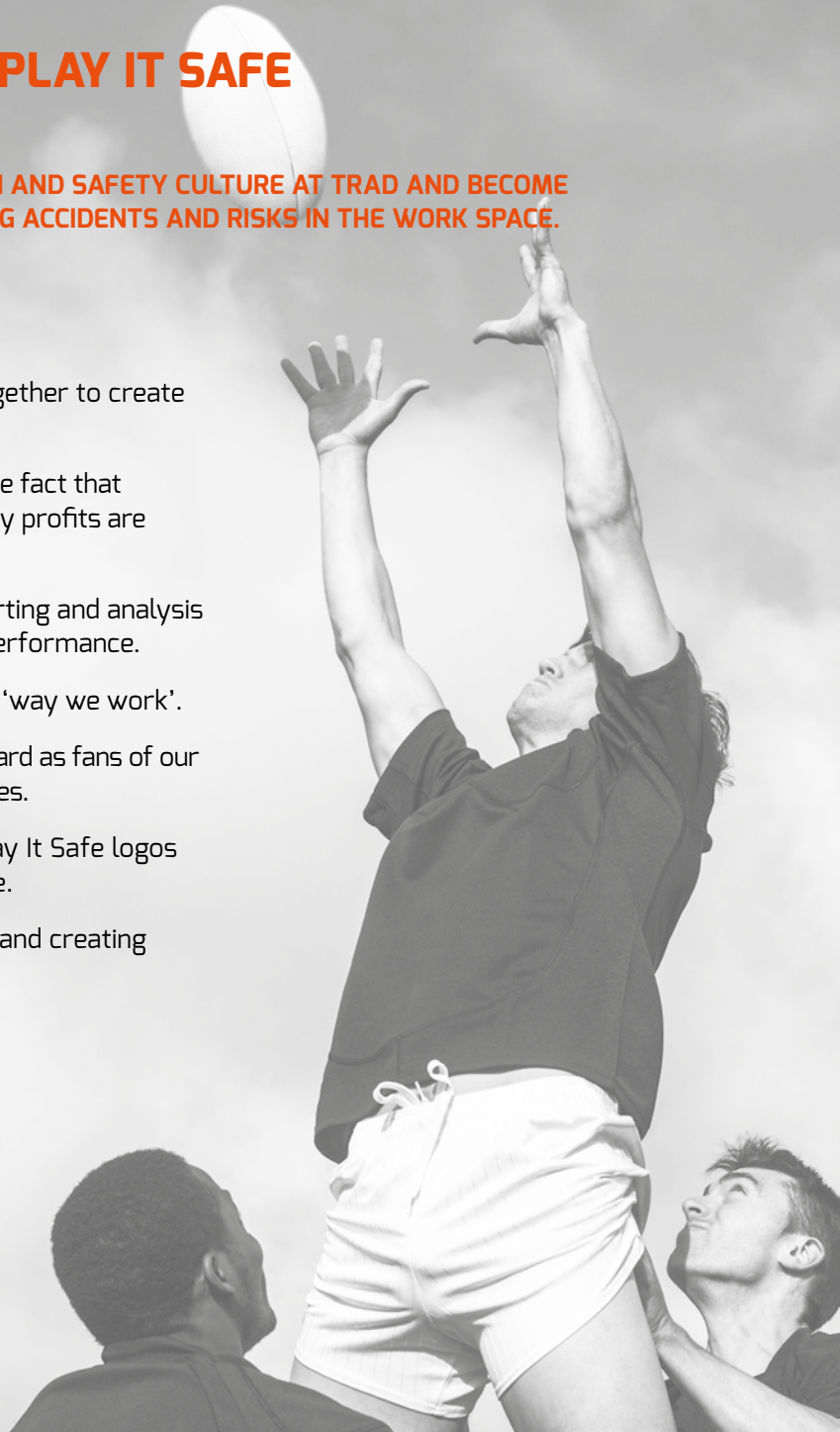


# THE GOAL OF PLAY IT SAFE

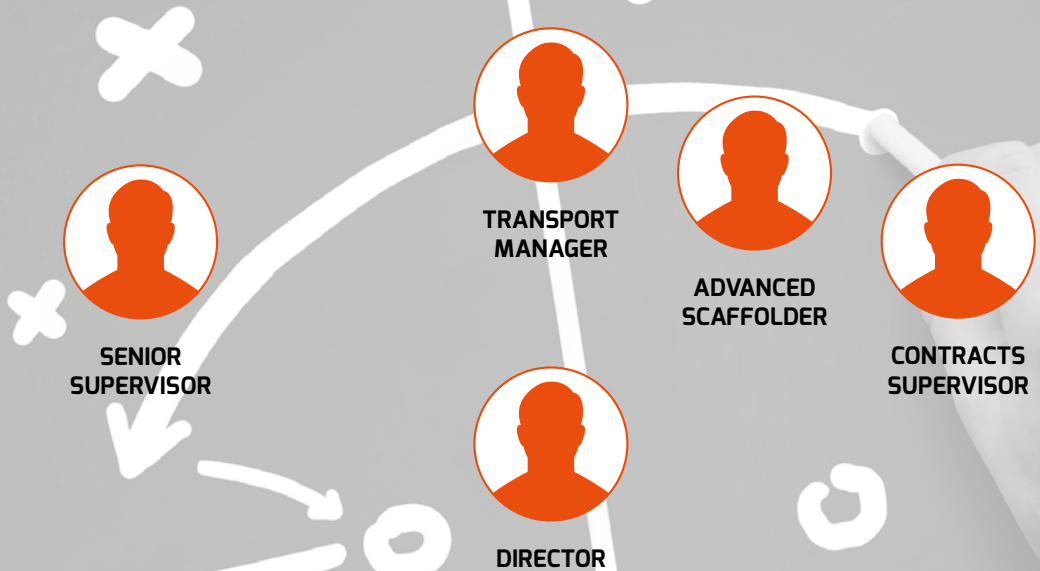
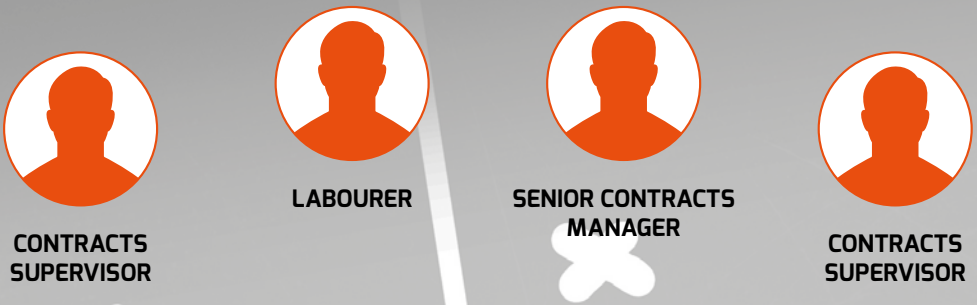
**TO IMPROVE THE HEALTH AND SAFETY CULTURE AT TRAD AND BECOME CHAMPIONS BY REDUCING ACCIDENTS AND RISKS IN THE WORK SPACE.**

## **WE AIM TO SCORE BY:**

- Bringing all our staff together to create a winning team spirit.
- Constantly reinforcing the fact that health, safety and healthy profits are intrinsically linked.
- Making 'near miss' reporting and analysis a real tool to improve performance.
- Taking ownership of the 'way we work'.
- Getting customers on board as fans of our health and safety initiatives.
- Using corporate and Play It Safe logos to create a united image.
- Gaining repeat business and creating a secure future for all.



## THE SAFETY LEADERSHIP TEAM



## TRAINING THE SQUAD

'Play It Safe' will provide ongoing training for managers, supervisors and site operatives, in all aspects of health and safety procedures, with a quarterly review of programmes to keep everyone up to date.

### **We will communicate 'Play It Safe' to the entire workforce through:**

- Q&A forums with Divisional Directors.
- Face-to-face meetings between management and new employees.
- Continuous performance updates through newsletters and bulletins.
- Site visits from Divisional Directors to discuss health and safety issues.

By having our health and safety managers attend all National Access and Scaffolding Confederation meetings, we can share best practice and 'near-misses' with other operators, and set up forums helping TRAD and other scaffolding companies improve health and safety.





## OUR 5 KEY SAFETY BEHAVIOURS & CONDITIONS



### SEGREGATION

Protect others with, Chapter 8 Barriers, Warning Signs, Fans etc.



### SAFE SYSTEMS OF WORK

Work to the RAMS, work safely and to SG4.



### PERSONAL PROTECTION EQUIPMENT

Wear full PPE – including, Helmet, Safety Boots, Hi-Vis, Gloves (and Harness if trained).



### HOUSEKEEPING

Keep your work area tidy, with no trip hazards.



### QUALITY

Erect ties progressively – e.g. on the base lift, every other lift & top lift and erect a neat and safe scaffold (TG20).

## 'PLAY IT SAFE' IS A WINNER

### OUR CAMPAIGN BENEFITS EVERYONE INVOLVED IN SCAFFOLDING:

#### EMPLOYEES

Effective help and advice to work safer, with our goals clearly set out.

#### CUSTOMERS & THE PUBLIC

Reassurance and peace of mind from seeing our policies in action.

#### TRAD

We can grow our business, confident we're doing everything we can to achieve complete scaffolding safety.

## BECOME A FAN

To find out more about 'Play It Safe' and discover recent innovations by TRAD to improve Health and Safety on our sites visit **[www.tradscaffolding.com](http://www.tradscaffolding.com)**

## NEAR MISS REPORTS

Then there's our 'near miss' reporting system, which ensures every near miss report is reviewed personally by our Managing Director. Staff, clients and the general public can report near misses in complete confidence by text, phone or by putting cards in near miss boxes in reception areas and transport offices.

Report a near miss by texting

**07860 021 792**

or PHONE the H&S Department

**020 8980 1155**





## This image shows a single sheet of white paper with horizontal blue or grey ruling lines. The lines are evenly spaced and run across the width of the page. There are approximately 20 lines visible. The paper has a slight shadow on the right side, suggesting it's resting on a surface.



**TRAD  
SCAFFOLDING**  
CONTRACTORS

#### **CHERTSEY DIVISION**

3000 Hillswood  
Business Park,  
Chertsey  
KT16 0RS

+44 (0)20 8814 3220

#### **BROMLEY DIVISION**

South Tower,  
26 Elmfield Road,  
Bromley  
BR1 1LR

+44 (0)20 8980 1155

#### **BARKING DIVISION**

TRAD Barking Office & Yard  
Renwick Road,  
Barking  
IG11 0SB

+44 (0)20 8517 5189

#### **LOUGHBOROUGH DIVISION**

Unit D, The Locks,  
Belton Road West Extension,  
Loughborough  
LE11 5XH

+44 (0)12 1516 3999

#### **OLDBURY DIVISION**

Unit 8, Junction 2 Industrial  
Estate, Demuth Way,  
Oldbury  
B69 4LT

+44 (0)12 1516 3999

#### **SALFORD DIVISION**

Unit 3, Bridge Mill,  
Holland Street,  
Salford, Manchester  
M6 6EL

+44 (0)12 1516 3999

**08458 99 55 55**

**[www.tradscaffolding.com](http://www.tradscaffolding.com)**